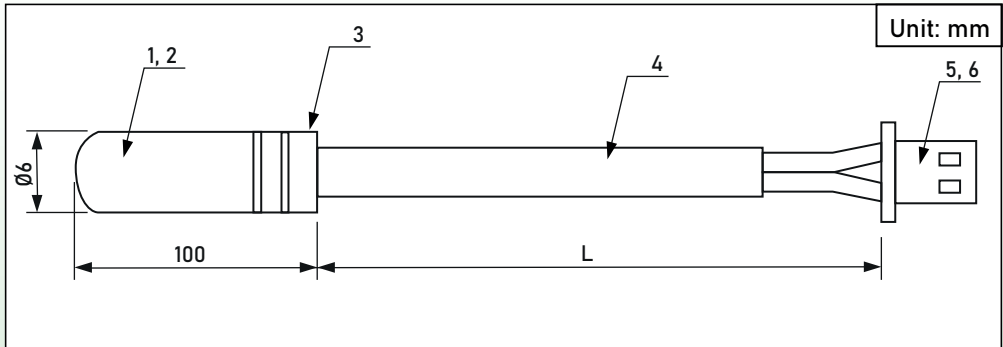


NTC
Sensor

RoHS
2002/95/EC

KWCN-171-30-1.3



XII-2Y Plastic terminal	6	Plastic terminal	1	
XII-Connector	5	Connector	2	
Ø3,2 PP-24AWG/2C TPE round jacket cable	4	Cable	1	
Ø6x100 304 Steel	3	Shell	1	
TBE black 80-85A	2	TPE cable		
103AT-2	1	NTC thermistor	1	
Material list	No	Part	Num.	Color

TECHNICAL SPECIFICATION

Nominal resistance: $R_{25}=10K\Omega\pm 1\%$

B-Value: $B_{25/85}=3435K\pm 1\%$

Working temperature range: $-20^{\circ}\text{C} +105^{\circ}\text{C}$

Insulation resistance: $>100M\Omega$ at 500VDC in water

Voltage endurance: Applying 1800VAC / 2S between the shell and the cable, there is no flash or broken (in air)

Fixing protective tube, and applying 10N/3S static pull strenght along the cable, no change for the appearance

RD
&
Components S.r.l.

Via Bergamo 6 - 20835 Muggiò(MB) ITALY
Tel. +39 039 2328773 P.IVA: 12934630158
www.rdcomponents.com - www.rdc-service.it

RD
&
Service